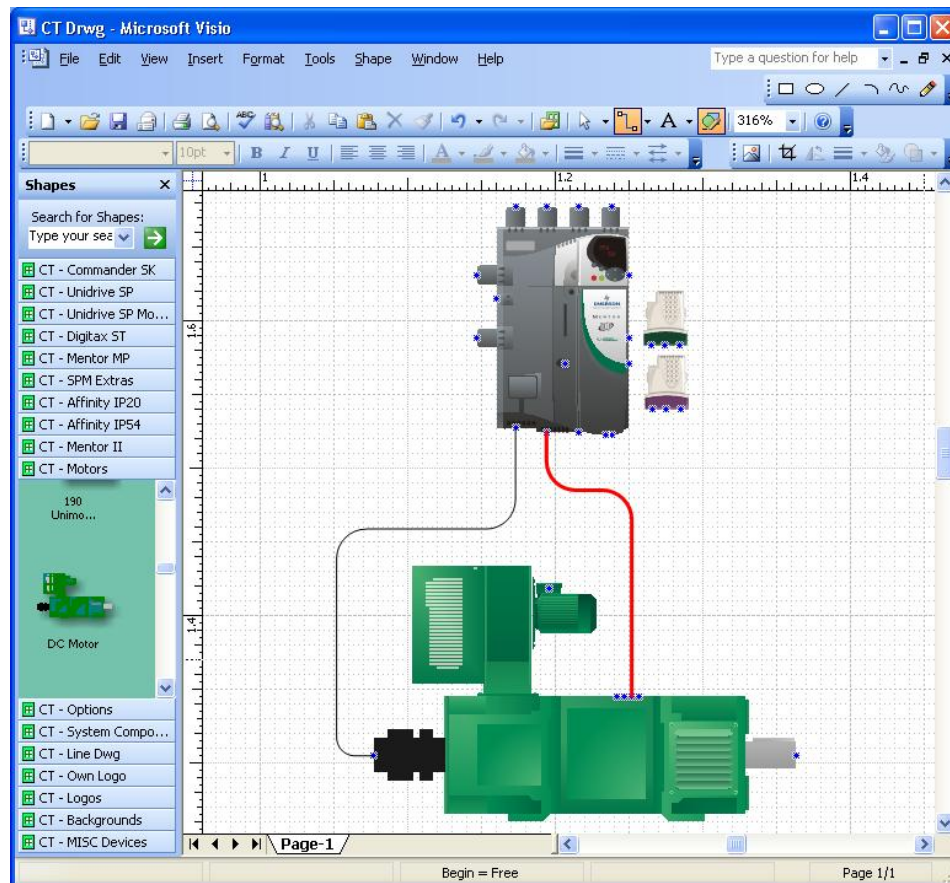




New Visio Shapes

Our latest Visio templates cover of our key products and many system integration items such as PLCs, PCs, I/O, Motion Controllers, Motors and much more.

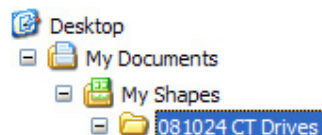
The templates all include connection points which allow different items to be linked together to create systems.



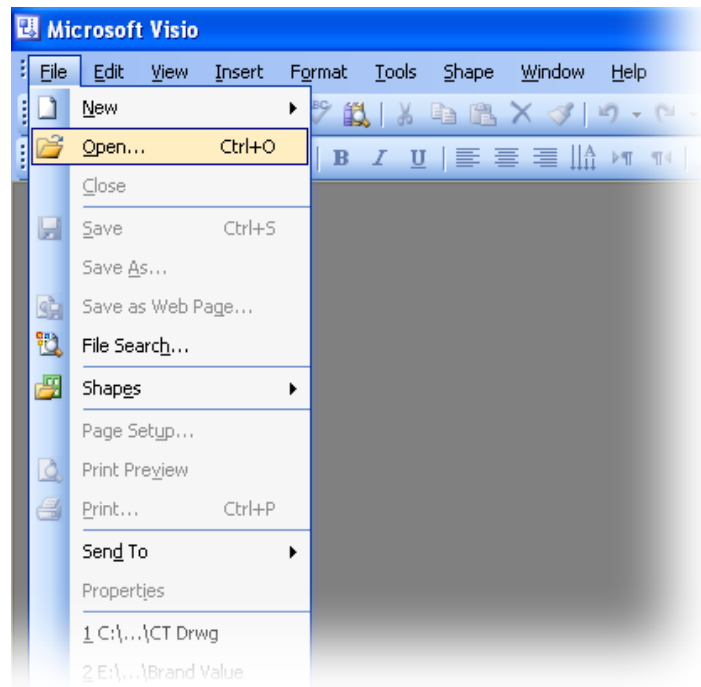
All of the new shapes are based on vector graphics which allow the images to be scaled as large as you wish without degrading the quality of the image.

To use these shapes you will need to have Visio 2003 or later.

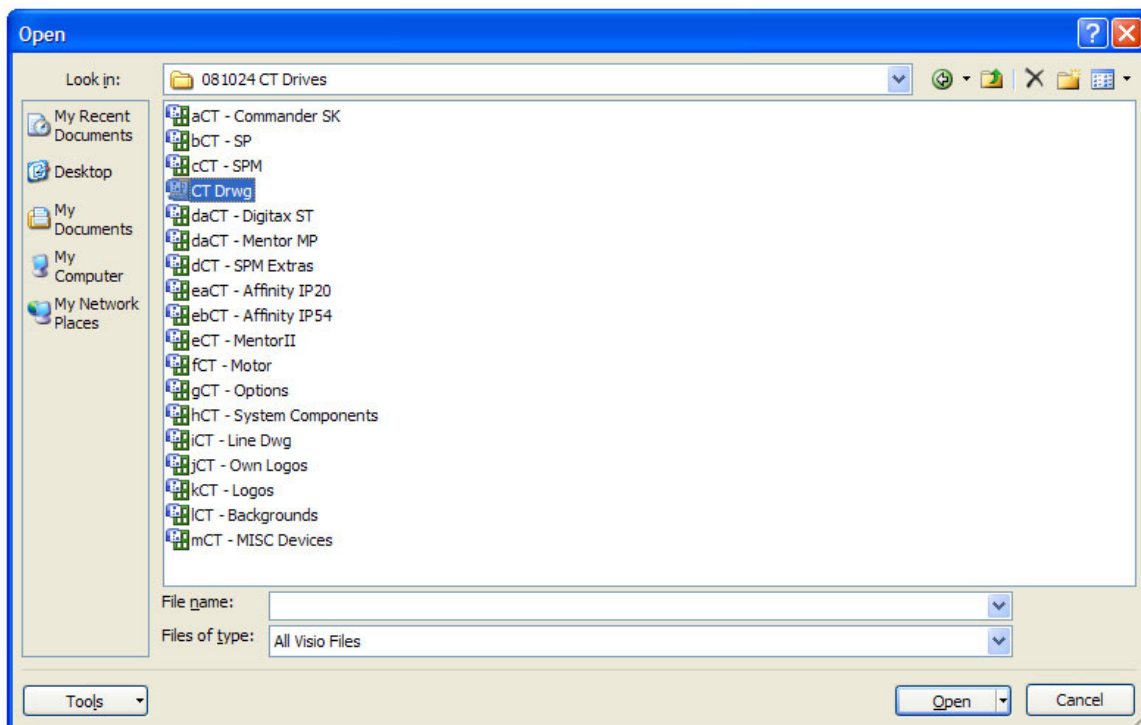
1) Place the files that you have downloaded in My Documents in the directory called My Shapes as shown below:



2) Open Visio and from the file menu choose open



3) In the directory <My Documents> open the directory called <My Shapes>, locate the downloaded files and open a template called CT Drwg.



4) This will load an empty window and all of the templates.